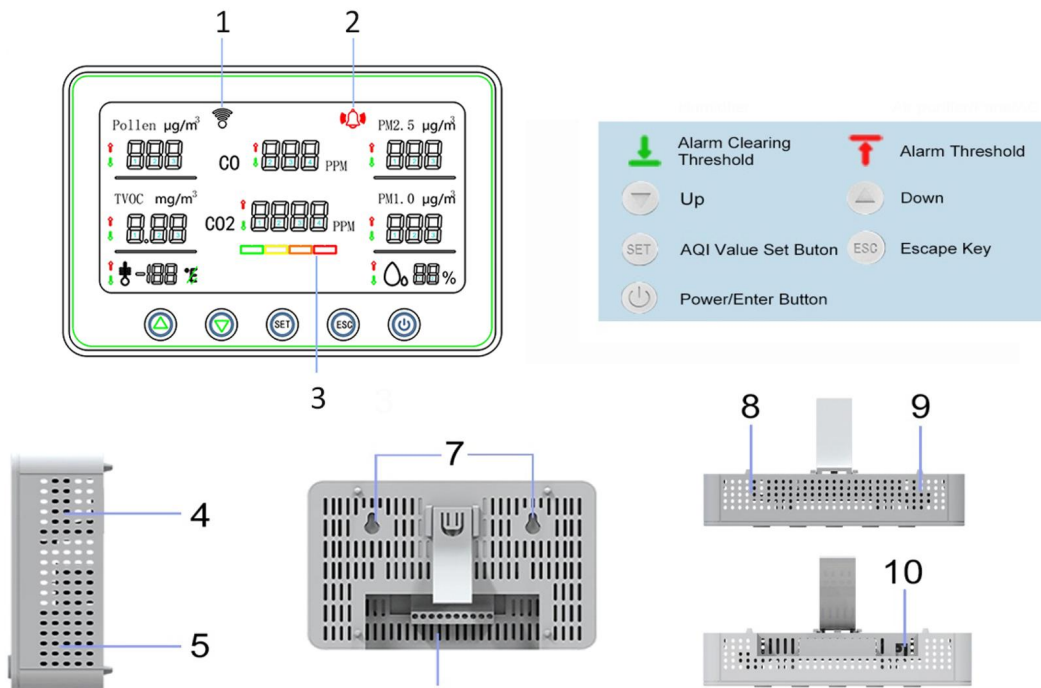


# Smart Indoor Multiple air quality Monitor



1. Wi-Fi Indicator

2. Alarm Indicator

3. Co2 level indicator

4. Buzzer Bit

5. Temp & Humidity Sensor

6. Development Port (ODM)

7. Mounting Hole

8. CO2 NDIR Sensor

9. TVOC/Dust/Pollen Laser Sensor

10. Charging Port

## PRODUCT PARAMETER

Product Name:	Smart indoor Multiple Air Quality Monitor
Model No.	PT02-Plus
Color:	Silver/Black/White
Temperature Measurement Range:	-20°C ~ 60°C; ±2 °C
Humidity Measurement Range:	5% ~ 95%RH; ±5%RH
Co2 Measurement Range:	400 - 5000ppm
Co2 Accuracy	±50ppm or ±5% of reading
CO Measurement Range:	0-999PPM
CO Accuracy	±10ppm or ±10% of reading
Co2/CO Resolution:	1ppm
TVOC Measurement Range:	0 ~ 19.99mg/m3
TVOC Resolution:	0.01mg/m3
Pollen Measurement Range:	0 ~ 500µg/m3
Pollen Accuracy:	0~100µg/m <sup>3</sup> , ±25µg/m <sup>3</sup> ; 101~500µg/m <sup>3</sup> , ±25% reading
PM1.0 Measurement Range:	0 ~ 500µg/m3
PM1.0 Accuracy	0~100µg/m <sup>3</sup> , ±10µg/m <sup>3</sup> ; 101~500µg/m <sup>3</sup> , ±10% reading
PM2.5 Measurement Range:	0 ~ 500µg/m3
PM2.5 Accuracy	0~100µg/m <sup>3</sup> , ±10µg/m <sup>3</sup> ; 101~500µg/m <sup>3</sup> , ±10% reading
Pollen/PM1.0/PM2.5 Resolution:	1 µg/m3
Working Temperature:	0 ° - 50 °C
Working humidity:	0-95% (non-condensing)
Input Voltage:	DC 5V/3A
Product Weight	1120g (Include package)
Product Size:	180mm(L) * 39mm(W) * 119mm(H)

## PRODUCT OPERATION

**1. Power Device on or Off:** Long-press the Power button to switch on/off the device.

**2. Wi-Fi setting: Please turn on the device first to set the Wi-Fi function:**

I. Rapidly press the **Power** button **three times** in a row to turn on or off Wi-Fi. (If the Wi-Fi icon flashing on the device screen means it's On.

And if there is no Wi-Fi icon shown on the screen means it's Off.)

II. Rapidly press the **Power** button **five times** in a row to **reset** the Wi-Fi function.

It will take about ten seconds.

**3. Switch the temperature display between Fahrenheit and Celsius:**

To change the temperature displayed to read Celsius instead of Fahrenheit (or Fahrenheit to Celsius):

I. Long press the **Power** button to switch it on.

II. Rapidly press the **Power** button **two times** in a row.

**4. Alarm Silence/Mute/Unmute function:** When any of the following AQI indexes (CO<sub>2</sub>, CO, Pollen, PM<sub>1.0</sub>, PM<sub>2.5</sub>, TVOC, Humidity) reaches the Alarm Threshold, the unit alarm will be sounding for **ten seconds**, while the alarm icon keeps blinking until the values are down to the Alarm-shutdown Threshold. (The default alarm time is 10 seconds. You can **reset it on APP.**)

**Or you can choose to**

- I. Press the **Power button one time** in a row to **silence** the alarm.
- II. **Long Press** the 'ESC' button to **mute** the alarm. And the alarm logo will be **disappeared** on the screen.
- III. **Long Press** the 'ESC' button to **unmute** the alarm. And the alarm indicator will be **displayed** on the screen.

**5. Backlight adjustment:**

- I. Press the 'Set' button **one time** in a row for **dark** mode.
- II. Press the 'Set' button **one more time** for turning **off** the backlight.
- III. Press the 'Set' button **one more time** for turning **on** the backlight.

**6. Manual CO<sub>2</sub> Calibration setting: Please place the unit in the ventilated environment during the manual calibration.**


Rapidly press the 'ESC' button **three times** in a row to calibrate CO<sub>2</sub> values. The CO<sub>2</sub> Logo will blink on the screen during the manual calibration. It takes about **3 minutes** to complete the calibration. You can press the 'ESC' button to **cancel** the manual calibration.


**7. Factory reset: Rapidly press the 'ESC' button five times in a row to resume the factory setting**

- 1) The default CO<sub>2</sub> Alarm Threshold is 1500ppm, and the Alarm-shutdown Threshold is 1000ppm. The CO<sub>2</sub> alarm setting range is 700 - 5000ppm.
- 2) The default CO Alarm Threshold is 25ppm, and the Alarm-shutdown Threshold is 20ppm, The CO alarm setting range is 10-500ppm.
- 3) The default TVOC Alarm Threshold is 6mg/m<sup>3</sup>, and the Alarm-shutdown Threshold is 3mg/m<sup>3</sup>. The TVOC alarm setting range is 1-19.9mg/m<sup>3</sup>
- 4) The default Pollen Alarm Threshold is 80ug/m<sup>3</sup>, and the Alarm-shutdown Threshold is 40ug/m<sup>3</sup>. The Pollen alarm setting range is 10-200ug/m<sup>3</sup>.
- 5) The default PM<sub>2.5</sub> Alarm Threshold is 75ug/m<sup>3</sup>, and the Alarm-shutdown Threshold is 35ug/m<sup>3</sup>. The PM<sub>2.5</sub> alarm setting range is 10-200ug/m<sup>3</sup>.
- 6) The default PM<sub>1.0</sub> Alarm Threshold is 45ug/m<sup>3</sup>, and the Alarm-shutdown Threshold is 25ug/m<sup>3</sup>. The PM<sub>1.0</sub> alarm setting range is 10-200ug/m<sup>3</sup>.
- 7) The default Humidity Alarm Threshold is 30%, and the Alarm-shutdown Threshold is 40%. The Humidity alarm setting range is 15%-75%.
- 8) The default Temperature Alarm Threshold is 38°C (100°F), and the Alarm-shutdown Threshold is 30°C (87°F). (Only setup in App). The Temperature alarm setting range is 1°C (34°F) - 50°C (122°F).

**8. How to set the threshold values of CO<sub>2</sub>/TVOC/PM<sub>1.0</sub>/PM<sub>2.5</sub>/Humidity in the device:**

- A. The  icon stands for Alarm Threshold. The  icon stands for Alarm-shutdown Threshold.



I. If the AQI value is above the alarm threshold, the alarm will sound. The  and alarm icon will blink on the screen.

II. If the AQI value is below the alarm clearing threshold, the alarm icon stops blinking. And the  will flash for about ten seconds.

**B.** And you can reset the Threshold values:

I. Long press the 'SET' button to enter the setting interface.

II. Press the '△' button to increase the Threshold values and press the '▽' button to decrease the Threshold values.

III. Press the Power button one time to switch the setting between the  and  in the same section.

IV. Press the 'SET' button one time to move to the next section for setting.

V. Press the 'ESC' button one time to quit the setting without saving.

VI. Long press the 'SET' button to save the setting and quit.

#### **Areas of Application:**

**Home, Classroom, Office, Gym, Apartment, Hotel, etc.**

#### **NOTE**

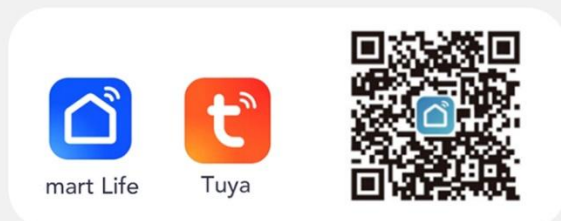
1. To ensure the accuracy of the detection, allow the device to stand for 10 minutes. It should be put in a ventilated environment for 24 hours to automatically calibrate itself if the device is required to work in a confined space. Or you can choose the manual calibration.
2. Do not place the detector in heavily polluted environments (concentration of TVOC > 20mg/m<sup>3</sup> or particle concentration > 500µg/m<sup>3</sup>) for a long time. Or it may cause damages to the sensor.
3. Do not place the monitor in an extreme environment such as high temperature or low temperature. This product does not protect against thunder, lightning, and rain. Make it used in a normal indoor environment.
4. Knocking, impacting, or disassembling the product may cause the detection to be inaccurate. Please keep the unit properly.
5. Try to avoid wearing perfumes and fragrances while using the product. That may impact your test results.

#### **WARNING**

1. Please keep the product unreachable for children and babies.
2. Please don't dismantle, modify, heating the product.
3. Avoid falling or heavy hitting.
4. Do not touch any part of the product with wet hands.
5. Do not allow the metal objects (like pins, keys) to contact terminals or plugs.
6. Do not cut, damage, or modify the power cord.

# CONNECTION STEPS

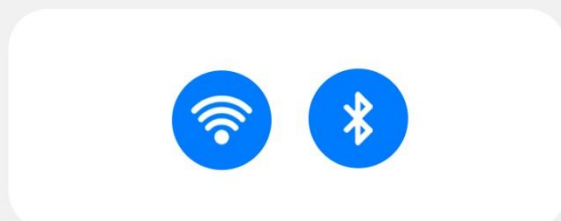
1. Search for and download "Tuya" or "Smart Life" from the APP store or Google Play, or scan QR code to download.



2. Register an account with mobile phone number or email and login it.



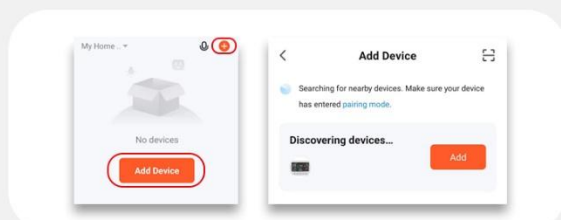
3. Turn on your phone's Wi-Fi and Bluetooth.



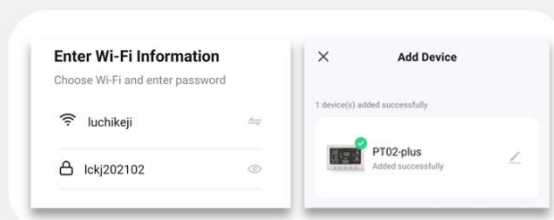
4. Long press the Power button to turn on the device, the Wi-Fi icon starts blinking.



5. Click "add device" or "+" on the APP, add the device. The connection box will pop up, click "Add" to start pairing.



6. Enter Wi-Fi name and password to connect. The connection is complete and you can enter the detection page.



## How to connect with Tuya App?

**Make sure your phone connects with 2.4Ghz Wi-Fi, Device Tuya APP Not support 2.5Ghz.**

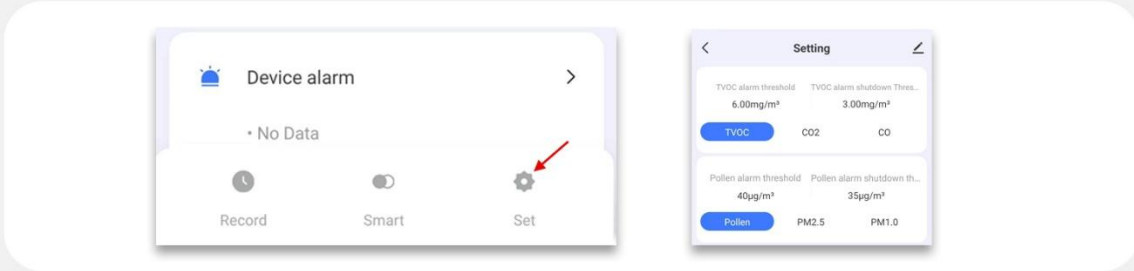
### Device Operation

- Long press the Power button. When the device is powered On, the Wi-Fi function will automatically turn on (The Wi-Fi icon starts blinking). At this time, you can open the Tuya app to connect.
- If there is no connection within two minutes, Wi-Fi will automatically shut down.
- Rapidly press the Power button three times in a row, Wi-Fi will turn on, and you can try to connect. Rapidly press the Power button three times again, Wi-Fi will turn off.
- If you want to connect to another phone or reset the connection, just reset the device by rapidly

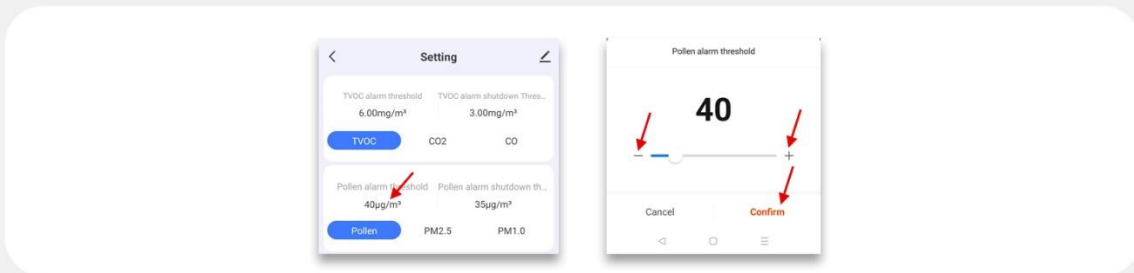
pressing the power button five times in a row and waiting for 5-10 seconds until the Wi-Fi icon flashes to start the new connection process.

- Invite your family members to join your Smart Home. Or share the device with multiple users.

7. Click "Set" on the detection page, enter into the Setting page. You can adjust the alarm threshold on the Setting page.



8. Take Pollen as an example. Click the Pollen alarm threshold value. It will pop up the update window, change the value by clicking "+" or "-", then click Confirm to save the changes.

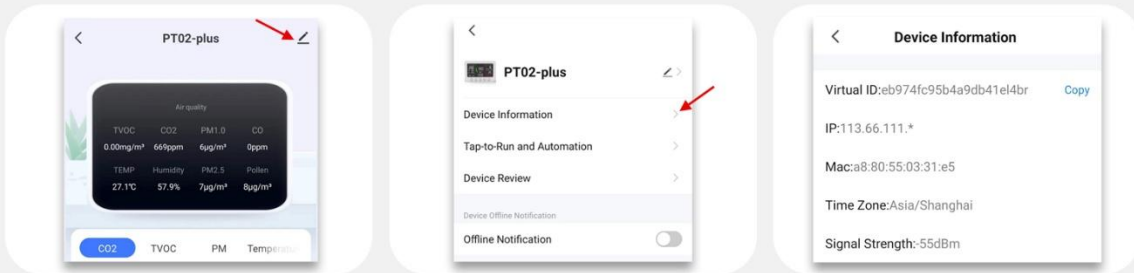


9. How to find the Device ID

a. Click Edit icon on the detection page.

b. Click "Device Information".

c. It will show the device ID and other information.



## How to set alarm value and shutdown value by TUYA app?

## How to switch temperature unit °C/°F through Tuya?

SET--Temp Convert---select °C or °F

## How to set the device backlight through Tuya?

SET—Backlight—select "closed" / "Level 1" / "Level 2"

## How to set alarm time through Tuya?

SET—Alarm time (1-60S)

### Can set device mute through Tuya or not?

Yes, SET—Mute/unmute

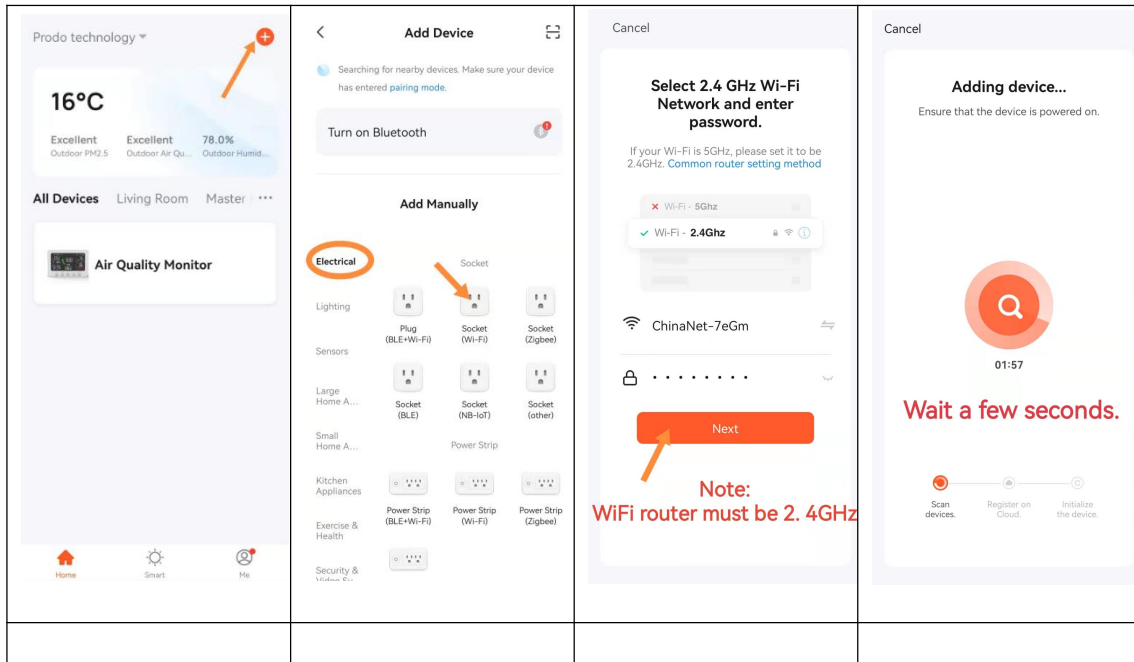
### How to inter-connect PT02-Plus and Smart Plug in Tuya app?

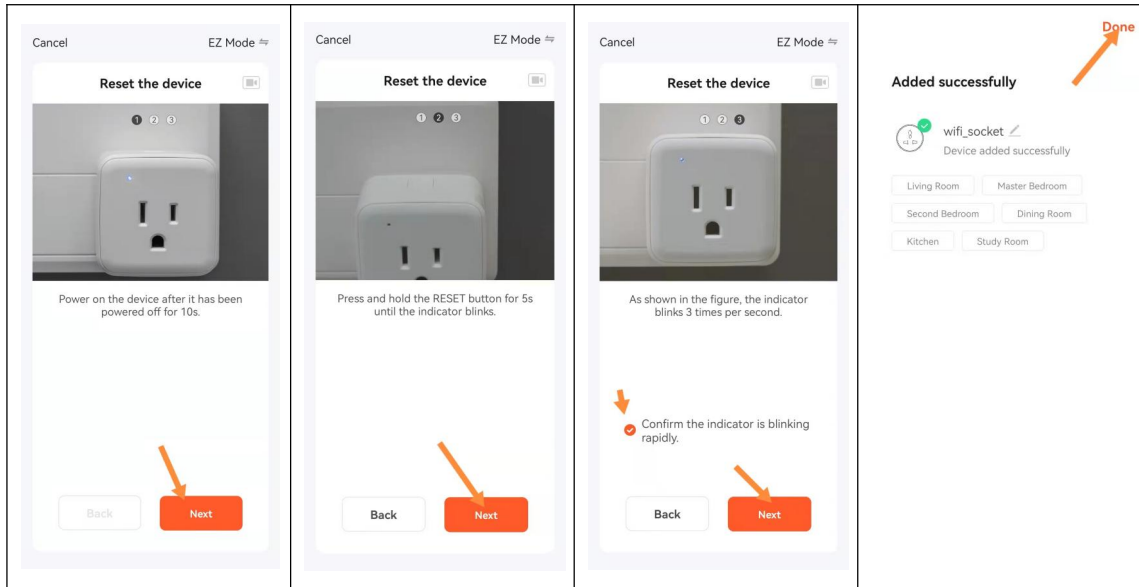
#### Smart Plug Operation

Smart Plug Blinking Blue:

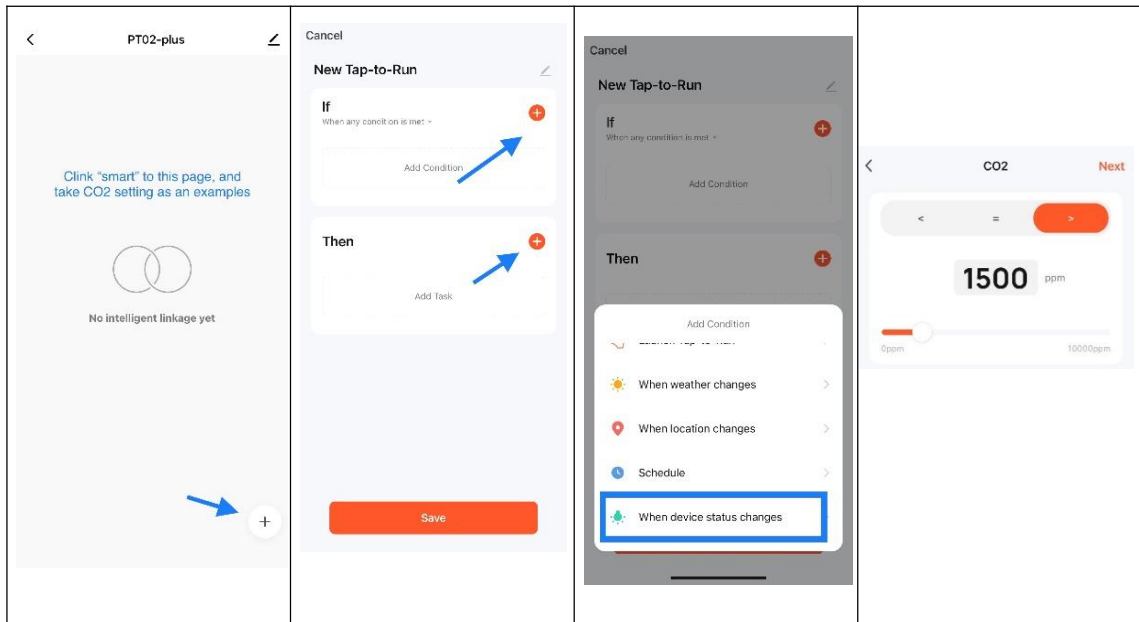
1. If the blue light is flashing rapidly on the Smart Plug(twice per second), that means it is in the connection mode and trying to connect with your Wi-Fi. The light will keep flashing blue until the setup process is complete.
2. Once the connection is stable and your Smart Plug is connected over the Wi-Fi, the light will turn on solid blue and you will be able to see the device on your APP.
3. If it blinks blue slowly(once every three seconds), long-press the Power button for 6 seconds until the blue light blinks rapidly.
4. Remark: Wi-Fi router must be 2.4GHz

#### Phone Operation (Plug connection)

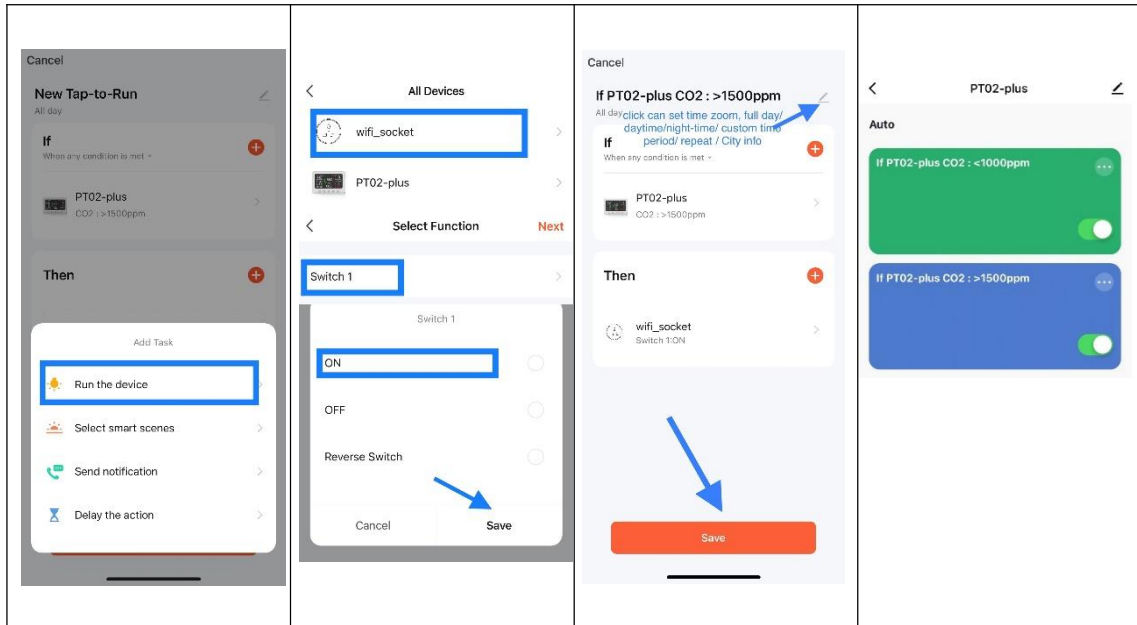




## How to create a smart scene for PT02 and Smart Plug in Tuya app?







### Explanation about ① and ②

① The control output value is the pre-set threshold alarm and alarm-shutdown values. Choose the control output, it will auto control the smart plug for open or close according to the pre-set values.

② You can set the random values according to your demand, but this value is not responding to the alarm or alarm-shutdown value of the device you set.



### Smart Scene Reference

The Fan will automatically turn on by Smart Plug when the CO2 reading is above the threshold of about 20 seconds.

The Fan will automatically turn off by Smart Plug when the CO2 reading is below the alarm-shutdown threshold of about 10 seconds.

(Both delay times mentioned above are the default setting. You can reset them based on your demand. Please refer to the next page)