

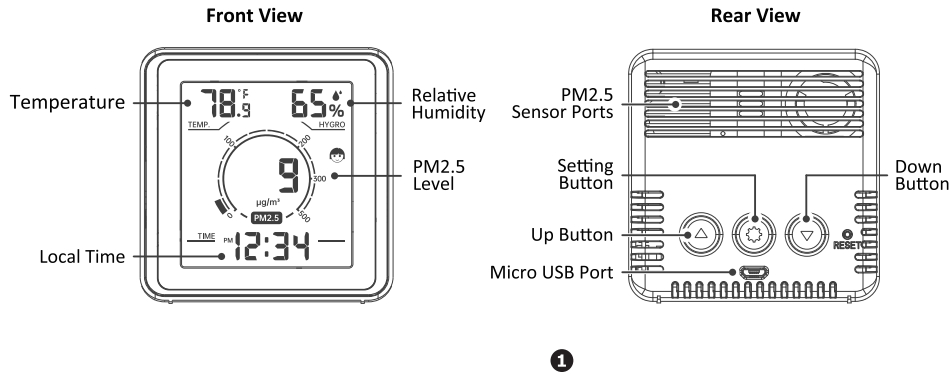
# User Manual for YT PM2.5 Meter

## 1. Safety Instructions

Please read the following information carefully before operating:

- 1.1 The meter can be operated in an environment of -9.9°C ~ 50°C. The meter may be damaged if used in other environments.
- 1.2 Please do not disassemble or repair the meter by yourself.
- 1.3 Clean the device with a soft, damp cloth and avoid getting moisture into any openings. Do not use caustic cleaners or abrasives.

## 2. Appearance



1

## 3. Operation

### 3.1 Power On

Connect the device to power with the USB cable provided. Wait a few seconds for the device to stabilize.

### 3.2 Set to Your Local Time and Temperature Units

Press and hold the **★** button for 3 seconds to enter the Set mode. Once in Set mode, the clock format area will blink. Press the **▲** or **▼** buttons to change the clock format. Click the **★** button again to save the changes and move to set the next parameter.

The parameter set order is as follows:

- 12 or 24 Clock
- Hour
- Minute
- °F or °C

If no button is pressed for 5 seconds then the changes will be saved and the unit will exit the Set mode.

2

## 4. Specification

Measurement Parameter	PM2.5	Humidity	Temperature
Measurement Range	0 to 999 µg/m³	1 ~ 99%RH	14°F ~ 122°F (-9.9 °C ~ 50°C)
Accuracy	0-100µg/m³: ±15 µg/m³ 101-500µg/m³: ±15% of Reading 501-999µg/m³: ±20% of Reading	±5%RH (40 ~ 80%RH) ±8%RH (Other range)	68°F ~ 75°F: ±1°F (32°F ~ 68°F)&(75°F ~ 104°F): ±2°F (32°F ~ 14°F)&(104°F ~ 122°F): ±3°F
Measuring Interval	5 seconds	30 seconds	30 seconds
Resolution	1 µg/m³	1%	0.1°C/0.1°F
Operation Temperature	-9.9°C ~ 50°C (14°F ~ 122°F)		
Power Supply	Micro USB power cable		
Input	100-240VAC, 50-60Hz		
Output	DC5V, 1000mA		
Case Material	ABS		
Size	81.5x80.6x30mm		
Weight	125g		
Color	Black		

3

## 5. Tips and helps

5.1 Proper product placement ensures it can provide accurate readings.

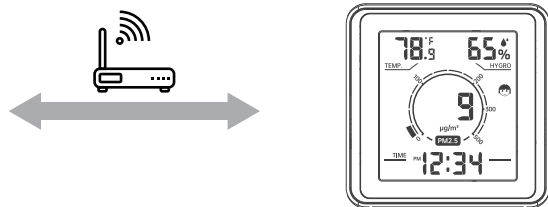
- Make sure it is at the right height and has good airflow;
- Height: place at sitting or standing level, typically 3 to 6 feet(0.9to1.8m) above the floor. Airflow: include at least 2 inches(5.08cm) of clearance from walls or other solid objects;
- Avoid placing by direct sunlight or near heat sources such as vents, stoves, or other elements that emit heat;
- Avoid placing in an area where airflow changes often, such as by air conditioning and heat vents, fans, doors;
- Avoid placing the unit on or near a window or other uninsulated surface, such as a brick wall, that can get much warmer or cooler.

5.2 It's recommended to also ensure the two air inlets do not have accumulated dust. A gentle puff of air can help to clear the air inlets and remove dust particles.

GZAIR provides full after-sales service to all customers. If you have any questions or concerns, please email us via [gzairstervice@outlook.com](mailto:gzairstervice@outlook.com) and we will answer you within 24 hours.

4

# How to connect PM2.5 Meter to Tuya?

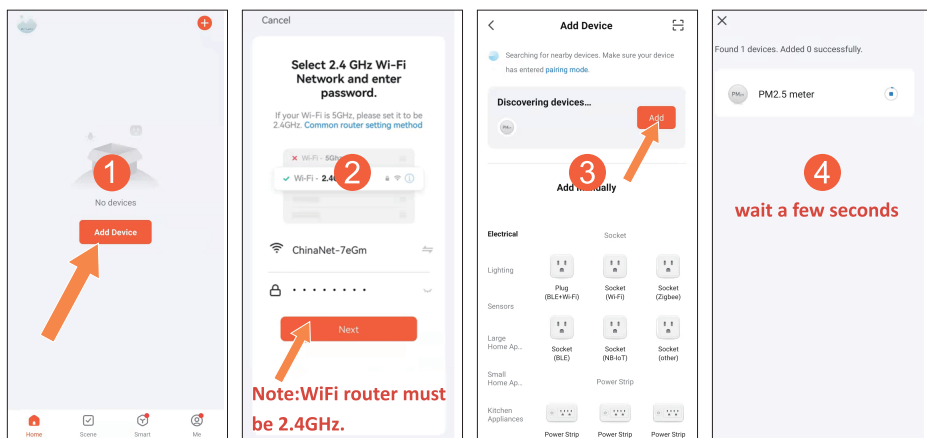


1. Device Operation: Press and hold the ▲ and ▼ buttons for 3 seconds. The time column will become "----", then the device is in pairing mode. You can open the Tuya APP to connect.

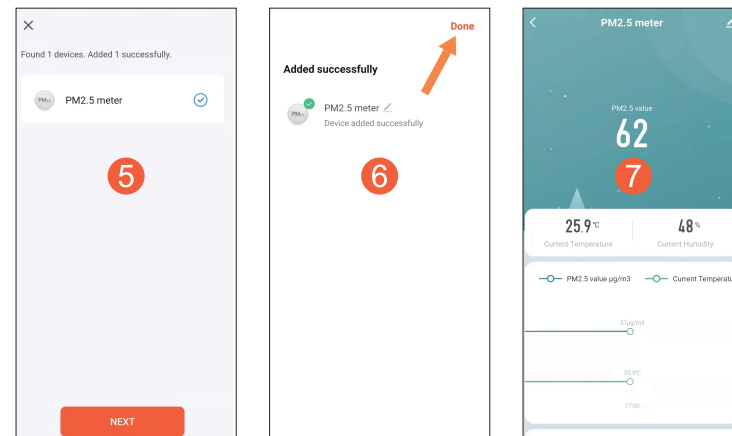


5

## 2. APP Operation



6

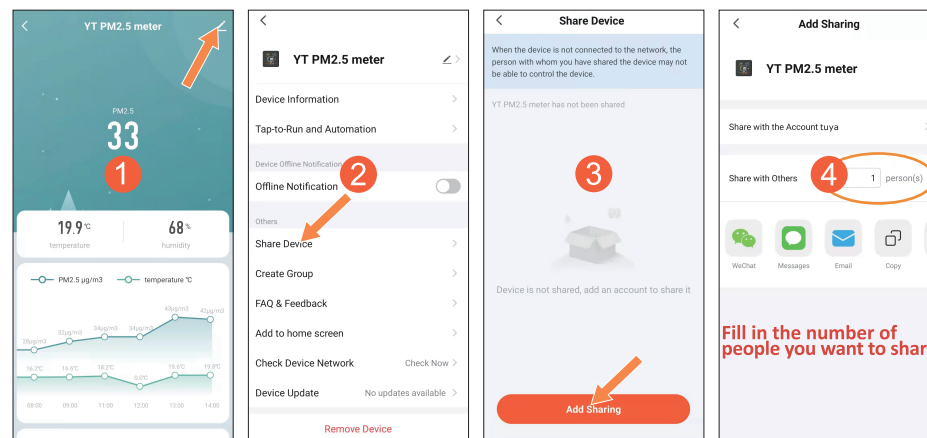


7

3. If there is no connection within three minutes, the unit will exit the pairing mode.  
4. If you want to connect to another phone or reset the connection, just reset the device by pressing the ▲ and ▼ buttons for 5 seconds until the time column flashes to start the new connection process.

Remark: Wi-Fi route must be 2.4GHz

## How to share device with your family member?



8